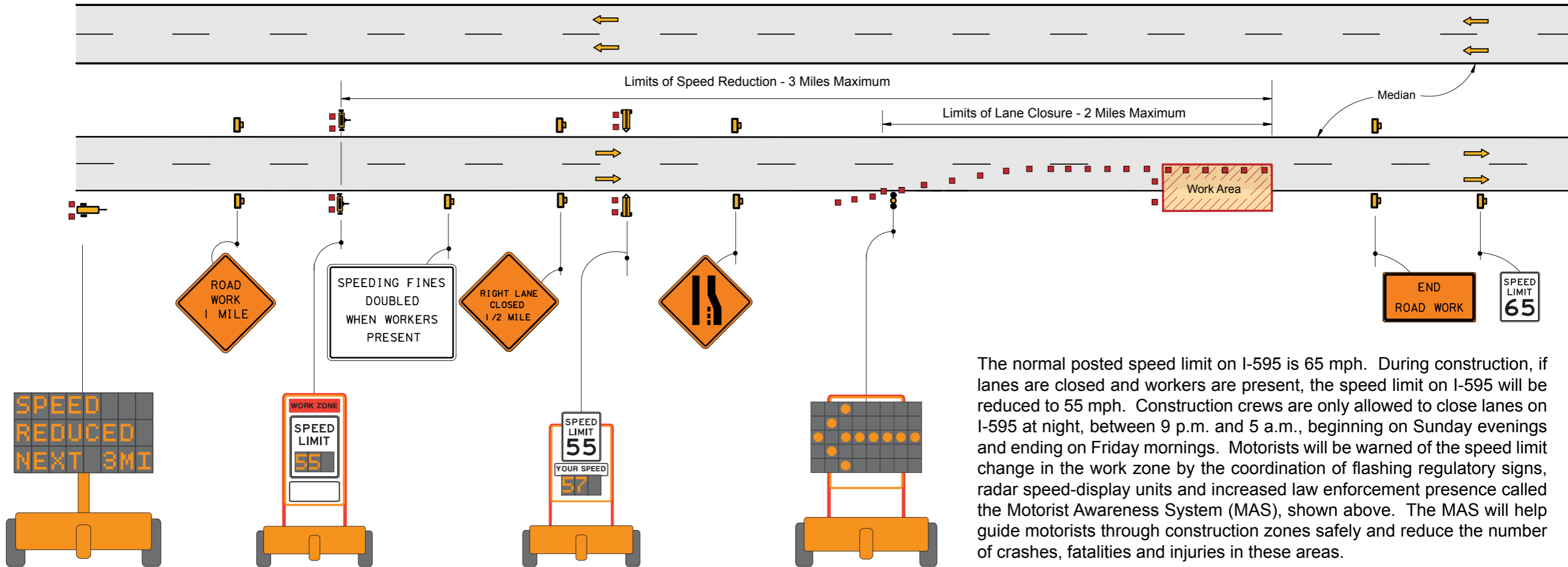


Motorist Awareness System (MAS)



The normal posted speed limit on I-595 is 65 mph. During construction, if lanes are closed and workers are present, the speed limit on I-595 will be reduced to 55 mph. Construction crews are only allowed to close lanes on I-595 at night, between 9 p.m. and 5 a.m., beginning on Sunday evenings and ending on Friday mornings. Motorists will be warned of the speed limit change in the work zone by the coordination of flashing regulatory signs, radar speed-display units and increased law enforcement presence called the Motorist Awareness System (MAS), shown above. The MAS will help guide motorists through construction zones safely and reduce the number of crashes, fatalities and injuries in these areas.